

AGING SERVICES IN SENATE DISTRICT 1

Contact:

Rachel Monger, President & CEO
785.233.7443, rachel@leadingagekansas.org

Population Profile:

- Total Population = 71,739
 - Over 65 = 14,421
 - Medicaid (65+) = 1,024

Provider Profile:

- Residential & Nursing Care = 19
- Home Health Care = 6
- Assisted Living = 8

Focus on Residential & Nursing Care:

Economic Impact (2022):

- Direct Employment = 898
- Total Jobs Supported = 1,220
- Direct Wages = \$26,978,706
- Est. Total Wages = \$38,789,983
- Est. Contribution to Local Sales Tax Revenues = \$918,275

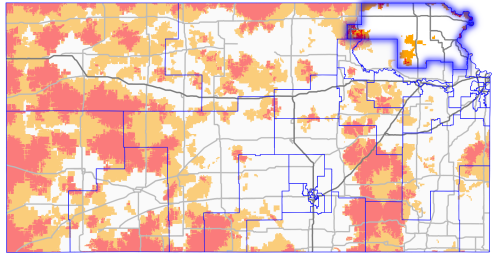
Risk to Access:

- 873 certified beds in this district
 - 107 fewer than the start of the pandemic
- 3,696 district residents have only one provider within a 30-minute drive
- 597 district residents have no providers within a 30-minute drive

Agency staffing is up **23.53%** since the start of the pandemic. This district has seen **above average** agency staffing cost increases.

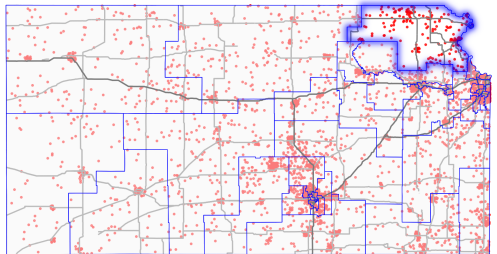
Providers Within a 30-Minute Drive

White > 1, Orange = 1, Red = 0



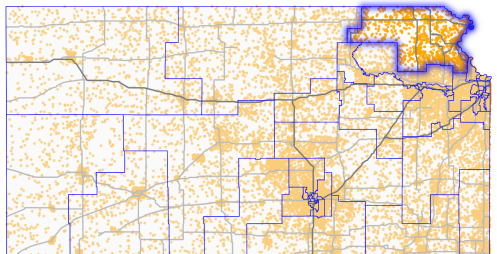
Where Kansas Aged 85+ Live

Dot = 10 Older Kansans



Where Kansas Aged 65 to 84 Live

Dot = 10 Older Kansans



AGING SERVICES IN SENATE DISTRICT 2

Contact:

Rachel Monger, President & CEO
785.233.7443, rachel@leadingagekansas.org

Population Profile:

- Total Population = 73,585
 - Over 65 = 8,117
 - Medicaid (65+) = 444

Provider Profile:

- Residential & Nursing Care = 3
- Home Health Care = 1
- Assisted Living = 1

Focus on Residential & Nursing Care:

Economic Impact (2022):

- Direct Employment = 235
- Total Jobs Supported = 319
- Direct Wages = \$5,875,150
- Est. Total Wages = \$8,447,291
- Est. Contribution to Local Sales Tax Revenues = \$199,973

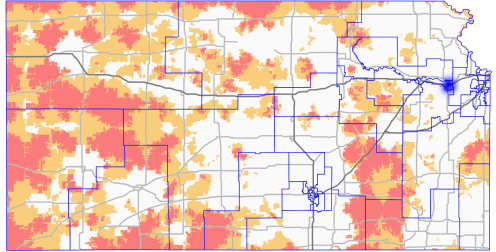
Risk to Access:

- 133 certified beds in this district
- 85,000 statewide have only one provider within a 30-minute drive
- 23,000 statewide have no providers within a 30-minutes drive

Agency staffing is up **around 60%** statewide since the start of the pandemic. This district has seen **above average** agency staffing cost increases.

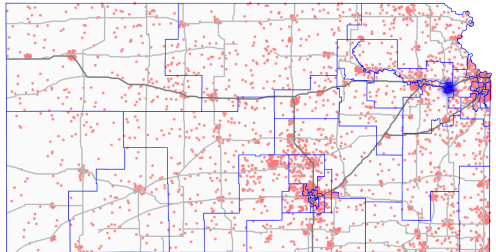
Providers Within a 30-Minute Drive

White > 1, Orange = 1, Red = 0



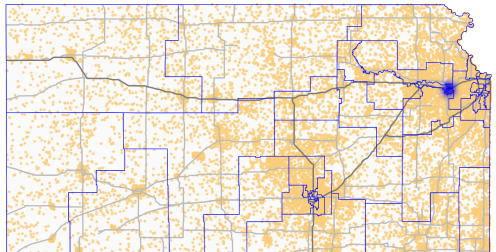
Where Kansas Aged 85+ Live

Dot = 10 Older Kansans



Where Kansas Aged 65 to 84 Live

Dot = 10 Older Kansans



AGING SERVICES IN SENATE DISTRICT 3

Contact:

Rachel Monger, President & CEO
785.233.7443, rachel@leadingagekansas.org

Population Profile:

- Total Population = 70,949
 - Over 65 = 14,386
 - Medicaid (65+) = 883

Provider Profile:

- Residential & Nursing Care = 4
- Home Health Care = 1
- Assisted Living = 6

Focus on Residential & Nursing Care:

Economic Impact (2022):

- Direct Employment = 322
- Total Jobs Supported = 437
- Direct Wages = \$8,083,097
- Est. Total Wages = \$11,621,877
- Est. Contribution to Local Sales Tax Revenues = \$275,125

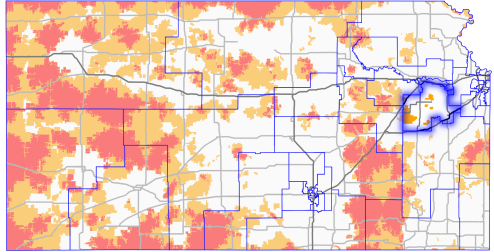
Risk to Access:

- 236 certified beds in this district
 - 32 fewer than the start of the pandemic
- 1,648 district residents have only one provider within a 30-minute drive
- 23,000 statewide have no providers within a 30-minutes drive

Agency staffing is up **233.33%** since the start of the pandemic. This district has seen **above average** agency staffing cost increases.

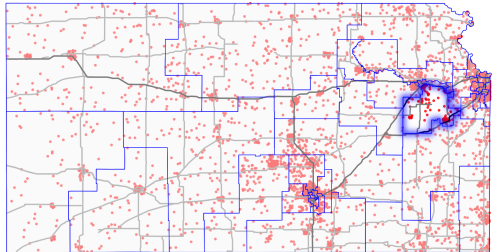
Providers Within a 30-Minute Drive

White > 1, Orange = 1, Red = 0



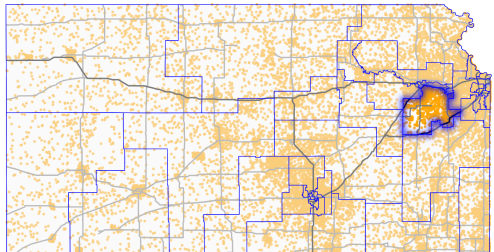
Where Kansas Aged 85+ Live

Dot = 10 Older Kansans



Where Kansas Aged 65 to 84 Live

Dot = 10 Older Kansans



AGING SERVICES IN SENATE DISTRICT 4

Contact:

Rachel Monger, President & CEO
785.233.7443, rachel@leadingagekansas.org

Population Profile:

- Total Population = 73,501
 - Over 65 = 9,314
 - Medicaid (65+) = 1,375

Provider Profile:

- Residential & Nursing Care = 3
- Home Health Care = 1
- Assisted Living = 1

Focus on Residential & Nursing Care:

Economic Impact (2022):

- Direct Employment = 265
- Total Jobs Supported = 360
- Direct Wages = \$6,340,187
- Est. Total Wages = \$9,115,921
- Est. Contribution to Local Sales Tax Revenues = \$215,801

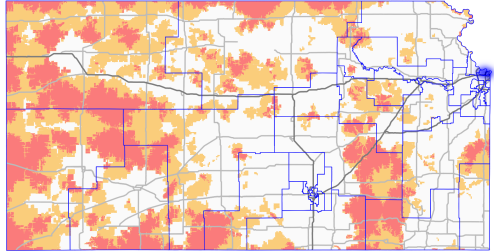
Risk to Access:

- 278 certified beds in this district
 - 33 fewer than the start of the pandemic
- 85,000 statewide have only one provider within a 30-minute drive
- 23,000 statewide have no providers within a 30-minutes drive

Agency staffing is up **around 60%** statewide since the start of the pandemic. Statewide, average agency staffing costs are up **\$14.62 per resident day** since 2020.

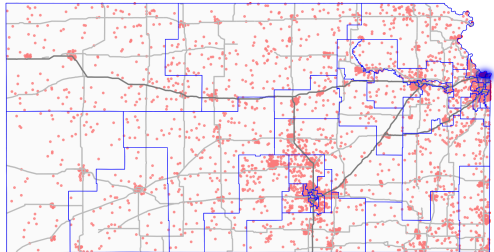
Providers Within a 30-Minute Drive

White > 1, Orange = 1, Red = 0



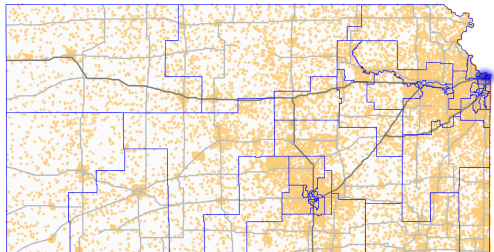
Where Kansans Aged 85+ Live

Dot = 10 Older Kansans



Where Kansans Aged 65 to 84 Live

Dot = 10 Older Kansans



AGING SERVICES IN SENATE DISTRICT 5

Contact:

Rachel Monger, President & CEO
785.233.7443, rachel@leadingagekansas.org

Population Profile:

- Total Population = 76,345
 - Over 65 = 10,828
 - Medicaid (65+) = 848

Provider Profile:

- Residential & Nursing Care = 3
- Home Health Care = 0
- Assisted Living = 5

Focus on Residential & Nursing Care:

Economic Impact (2022):

- Direct Employment = 237
- Total Jobs Supported = 322
- Direct Wages = \$5,108,845
- Est. Total Wages = \$7,345,497
- Est. Contribution to Local Sales Tax Revenues = \$173,890

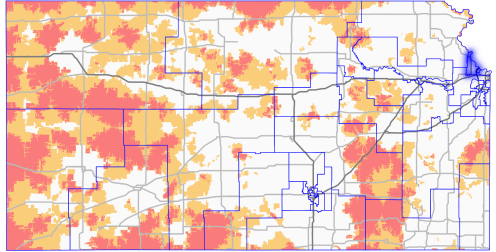
Risk to Access:

- 163 certified beds in this district
 - 20 fewer than the start of the pandemic
- 85,000 statewide have only one provider within a 30-minute drive
- 23,000 statewide have no providers within a 30-minutes drive

Agency staffing is up **120%** since the start of the pandemic. This district has seen **above average** agency staffing cost increases.

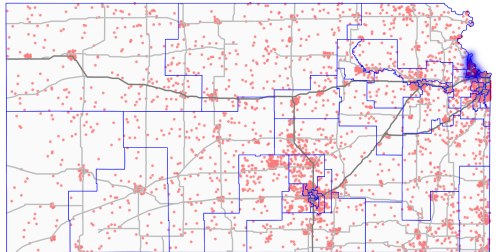
Providers Within a 30-Minute Drive

White > 1, Orange = 1, Red = 0



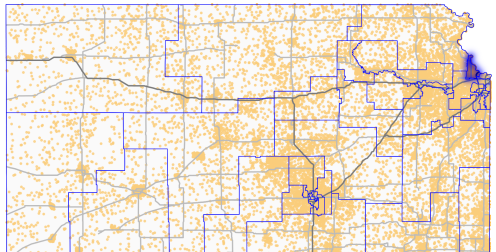
Where Kansas Aged 85+ Live

Dot = 10 Older Kansans



Where Kansas Aged 65 to 84 Live

Dot = 10 Older Kansans



AGING SERVICES IN SENATE DISTRICT 6

Contact:

Rachel Monger, President & CEO
785.233.7443, rachel@leadingagekansas.org

Population Profile:

- Total Population = 72,548
 - Over 65 = 8,898
 - Medicaid (65+) = 1,258

Provider Profile:

- Residential & Nursing Care = 3
- Home Health Care = 3
- Assisted Living = 1

Focus on Residential & Nursing Care:

Economic Impact (2022):

- Direct Employment = 255
- Total Jobs Supported = 346
- Direct Wages = \$17,954,320
- Est. Total Wages = \$25,814,721
- Est. Contribution to Local Sales Tax Revenues = \$611,112

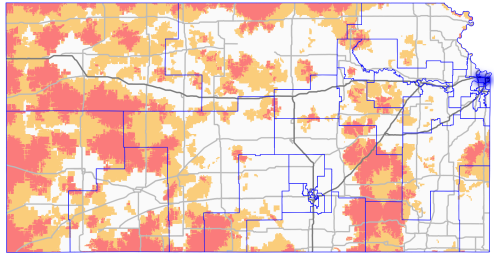
Risk to Access:

- 211 certified beds in this district
- 85,000 statewide have only one provider within a 30-minute drive
- 23,000 statewide have no providers within a 30-minutes drive

Agency staffing is up **500%** since the start of the pandemic. This district has seen **above average** agency staffing cost increases.

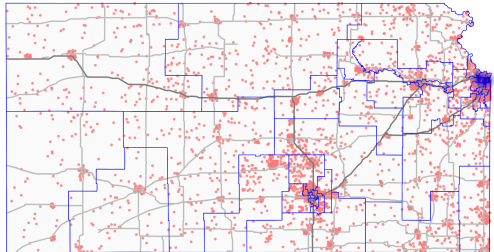
Providers Within a 30-Minute Drive

White > 1, Orange = 1, Red = 0



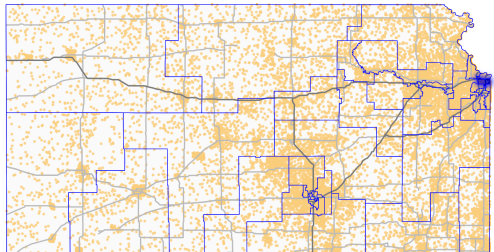
Where Kansans Aged 85+ Live

Dot = 10 Older Kansans



Where Kansans Aged 65 to 84 Live

Dot = 10 Older Kansans



AGING SERVICES IN SENATE DISTRICT 7

Contact:

Rachel Monger, President & CEO
785.233.7443, rachel@leadingagekansas.org

Population Profile:

- Total Population = 75,349
 - Over 65 = 13,999
 - Medicaid (65+) = 801

Provider Profile:

- Residential & Nursing Care = 3
- Home Health Care = 1
- Assisted Living = 5

Focus on Residential & Nursing Care:

Economic Impact (2022):

- Direct Employment = 188
- Total Jobs Supported = 255
- Direct Wages = \$1,136,943
- Est. Total Wages = \$1,634,697
- Est. Contribution to Local Sales Tax Revenues = \$38,698

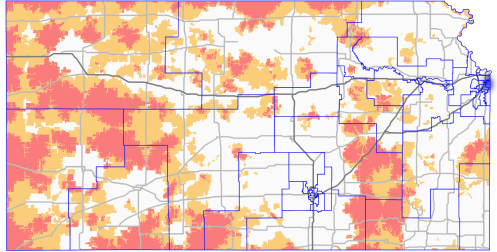
Risk to Access:

- 192 certified beds in this district
- 85,000 statewide have only one provider within a 30-minute drive
- 23,000 statewide have no providers within a 30-minutes drive

Agency staffing is up **115.15%** since the start of the pandemic. Statewide, average agency staffing costs are up **\$14.62 per resident day** since 2020.

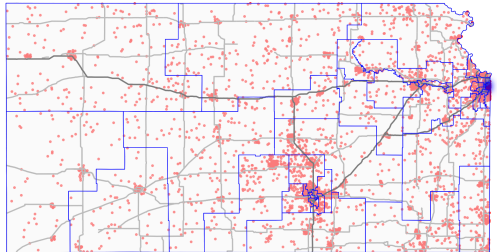
Providers Within a 30-Minute Drive

White > 1, Orange = 1, Red = 0



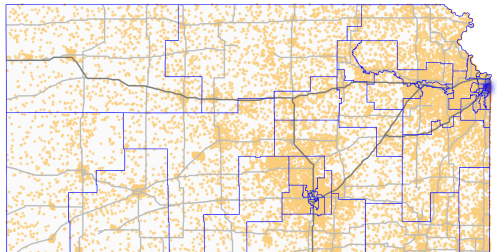
Where Kansas Aged 85+ Live

Dot = 10 Older Kansans



Where Kansas Aged 65 to 84 Live

Dot = 10 Older Kansans



AGING SERVICES IN SENATE DISTRICT 8

Contact:

Rachel Monger, President & CEO
785.233.7443, rachel@leadingagekansas.org

Population Profile:

- Total Population = 73,777
 - Over 65 = 15,789
 - Medicaid (65+) = 457

Provider Profile:

- Residential & Nursing Care = 10
- Home Health Care = 6
- Assisted Living = 10

Focus on Residential & Nursing Care:

Economic Impact (2022):

- Direct Employment = 1,099
- Total Jobs Supported = 1,493
- Direct Wages = \$12,336,735
- Est. Total Wages = \$17,737,758
- Est. Contribution to Local Sales Tax Revenues = \$419,906

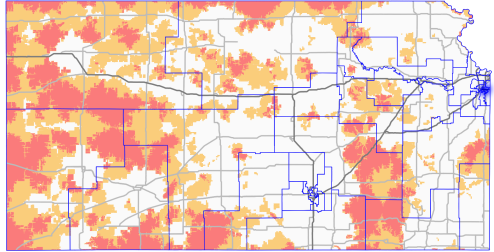
Risk to Access:

- 957 certified beds in this district
 - 10 fewer than the start of the pandemic
- 85,000 statewide have only one provider within a 30-minute drive
- 23,000 statewide have no providers within a 30-minutes drive

Agency staffing is up **58.2%** since the start of the pandemic. Statewide, average agency staffing costs are up **\$14.62 per resident day** since 2020.

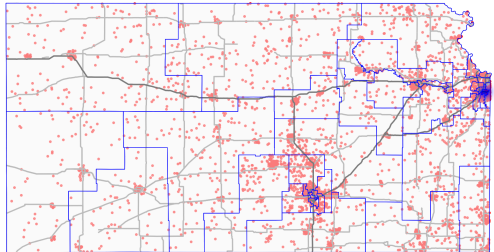
Providers Within a 30-Minute Drive

White > 1, Orange = 1, Red = 0



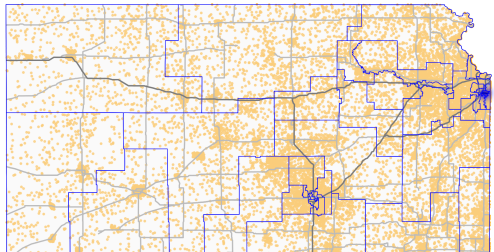
Where Kansans Aged 85+ Live

Dot = 10 Older Kansans



Where Kansans Aged 65 to 84 Live

Dot = 10 Older Kansans



AGING SERVICES IN SENATE DISTRICT 9

Contact:

Rachel Monger, President & CEO
785.233.7443, rachel@leadingagekansas.org

Population Profile:

- Total Population = 74,290
 - Over 65 = 11,708
 - Medicaid (65+) = 437

Provider Profile:

- Residential & Nursing Care = 10
- Home Health Care = 0
- Assisted Living = 5

Focus on Residential & Nursing Care:

Economic Impact (2022):

- Direct Employment = 897
- Total Jobs Supported = 1,218
- Direct Wages = \$28,166,704
- Est. Total Wages = \$40,498,087
- Est. Contribution to Local Sales Tax Revenues = \$958,711

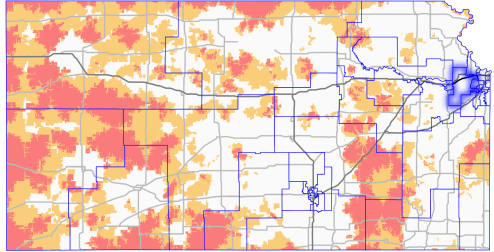
Risk to Access:

- 673 certified beds in this district
 - 9 fewer than the start of the pandemic
- 85,000 statewide have only one provider within a 30-minute drive
- 23,000 statewide have no providers within a 30-minutes drive

Agency staffing is up **158.06%** since the start of the pandemic. This district has seen **above average** agency staffing cost increases.

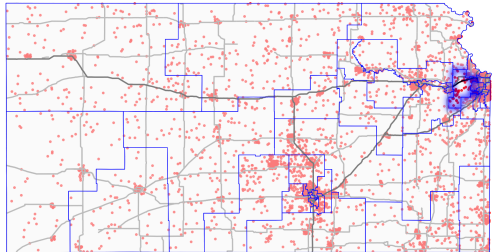
Providers Within a 30-Minute Drive

White > 1, Orange = 1, Red = 0



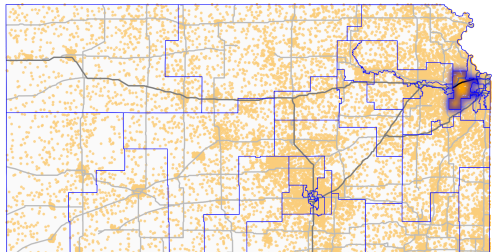
Where Kansans Aged 85+ Live

Dot = 10 Older Kansans



Where Kansans Aged 65 to 84 Live

Dot = 10 Older Kansans



AGING SERVICES IN SENATE DISTRICT 10

Contact:

Rachel Monger, President & CEO
785.233.7443, rachel@leadingagekansas.org

Population Profile:

- Total Population = 75,066
 - Over 65 = 11,416
 - Medicaid (65+) = 808

Provider Profile:

- Residential & Nursing Care = 3
- Home Health Care = 3
- Assisted Living = 3

Focus on Residential & Nursing Care:

Economic Impact (2022):

- Direct Employment = 404
- Total Jobs Supported = 549
- Direct Wages = \$6,952,916
- Est. Total Wages = \$9,996,903
- Est. Contribution to Local Sales Tax Revenues = \$236,657

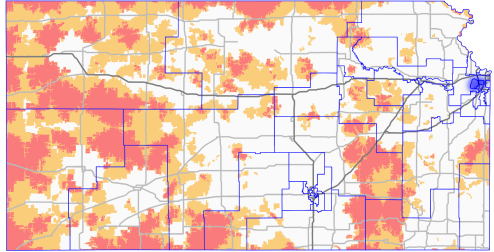
Risk to Access:

- 300 certified beds in this district
- 85,000 statewide have only one provider within a 30-minute drive
- 23,000 statewide have no providers within a 30-minutes drive

Agency staffing is up **250%** since the start of the pandemic. Statewide, average agency staffing costs are up **\$14.62 per resident day** since 2020.

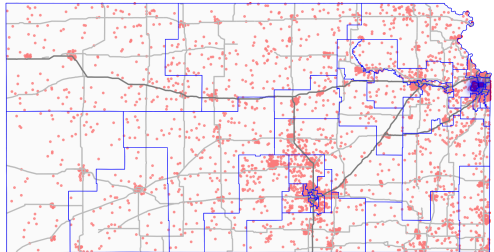
Providers Within a 30-Minute Drive

White > 1, Orange = 1, Red = 0



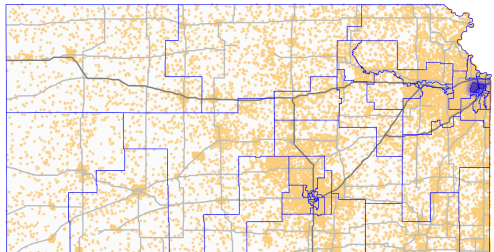
Where Kansans Aged 85+ Live

Dot = 10 Older Kansans



Where Kansans Aged 65 to 84 Live

Dot = 10 Older Kansans



AGING SERVICES IN SENATE DISTRICT 11

Contact:

Rachel Monger, President & CEO
785.233.7443, rachel@leadingagekansas.org

Population Profile:

- Total Population = 73,908
 - Over 65 = 13,123
 - Medicaid (65+) = 476

Provider Profile:

- Residential & Nursing Care = 2
- Home Health Care = 2
- Assisted Living = 6

Focus on Residential & Nursing Care:

Economic Impact (2022):

- Direct Employment = 193
- Total Jobs Supported = 262
- Direct Wages = \$6,337,076
- Est. Total Wages = \$9,111,448
- Est. Contribution to Local Sales Tax Revenues = \$215,695

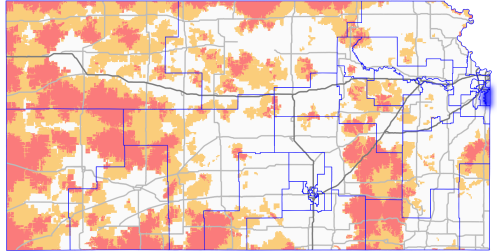
Risk to Access:

- 114 certified beds in this district
- 85,000 statewide have only one provider within a 30-minute drive
- 23,000 statewide have no providers within a 30-minutes drive

Agency staffing is up **125%** since the start of the pandemic. Statewide, average agency staffing costs are up **\$14.62 per resident day** since 2020.

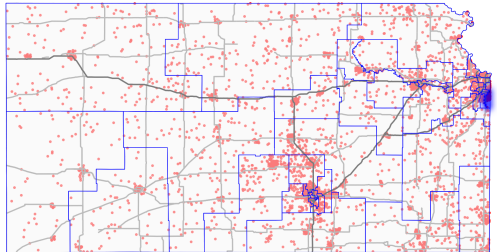
Providers Within a 30-Minute Drive

White > 1, Orange = 1, Red = 0



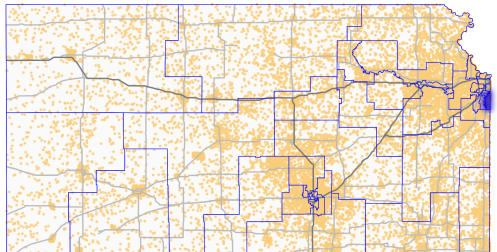
Where Kansans Aged 85+ Live

Dot = 10 Older Kansans



Where Kansans Aged 65 to 84 Live

Dot = 10 Older Kansans



AGING SERVICES IN SENATE DISTRICT 12

Contact:

Rachel Monger, President & CEO
785.233.7443, rachel@leadingagekansas.org

Population Profile:

- Total Population = 72,409
 - Over 65 = 15,256
 - Medicaid (65+) = 1,210

Provider Profile:

- Residential & Nursing Care = 12
- Home Health Care = 2
- Assisted Living = 5

Focus on Residential & Nursing Care:

Economic Impact (2022):

- Direct Employment = 625
- Total Jobs Supported = 849
- Direct Wages = \$19,427,282
- Est. Total Wages = \$27,932,546
- Est. Contribution to Local Sales Tax Revenues = \$661,247

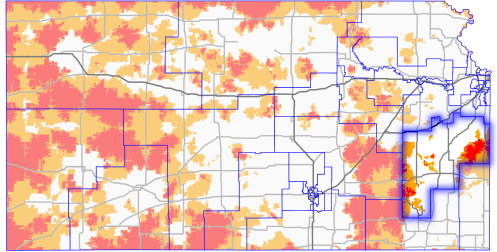
Risk to Access:

- 641 certified beds in this district
 - 40 fewer than the start of the pandemic
- 8,630 district residents have only one provider within a 30-minute drive
- 2,257 district residents have no providers within a 30-minute drive

Agency staffing is up **109.76%** since the start of the pandemic. Statewide, average agency staffing costs are up **\$14.62 per resident day** since 2020.

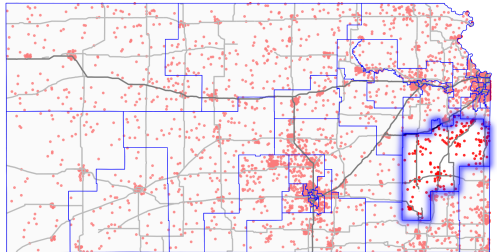
Providers Within a 30-Minute Drive

White > 1, Orange = 1, Red = 0



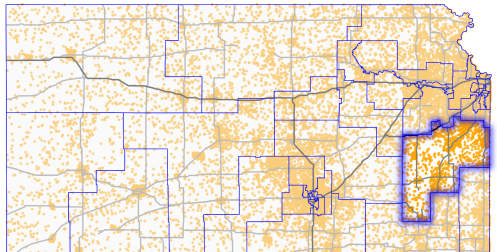
Where Kansans Aged 85+ Live

Dot = 10 Older Kansans



Where Kansans Aged 65 to 84 Live

Dot = 10 Older Kansans



AGING SERVICES IN SENATE DISTRICT 13

Contact:

Rachel Monger, President & CEO
785.233.7443, rachel@leadingagekansas.org

Population Profile:

- Total Population = 72,694
 - Over 65 = 13,060
 - Medicaid (65+) = 1,678

Provider Profile:

- Residential & Nursing Care = 10
- Home Health Care = 3
- Assisted Living = 5

Focus on Residential & Nursing Care:

Economic Impact (2022):

- Direct Employment = 534
- Total Jobs Supported = 725
- Direct Wages = \$20,930,459
- Est. Total Wages = \$30,093,814
- Est. Contribution to Local Sales Tax Revenues = \$712,411

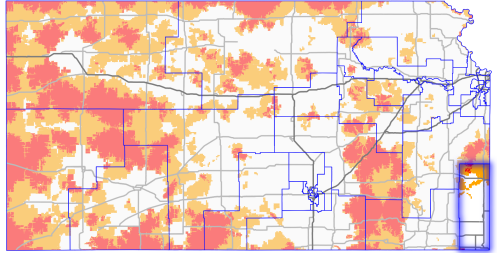
Risk to Access:

- 517 certified beds in this district
 - 84 fewer than the start of the pandemic
- 3,449 district residents have only one provider within a 30-minute drive
- 300 district residents have no providers within a 30-minute drive

Agency staffing is up **27.27%** since the start of the pandemic. This district has seen **above average** agency staffing cost increases.

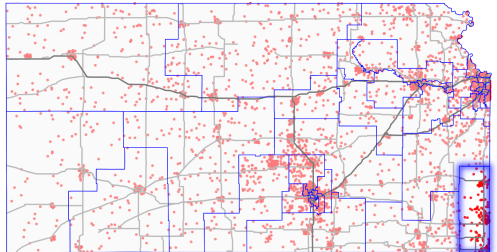
Providers Within a 30-Minute Drive

White > 1, Orange = 1, Red = 0



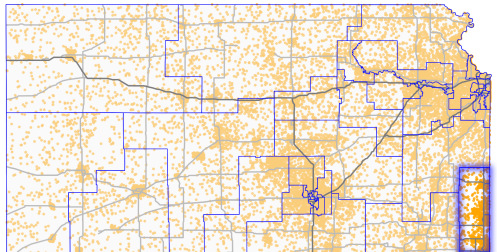
Where Kansas Aged 85+ Live

Dot = 10 Older Kansans



Where Kansas Aged 65 to 84 Live

Dot = 10 Older Kansans



AGING SERVICES IN SENATE DISTRICT 14

Contact:

Rachel Monger, President & CEO
785.233.7443, rachel@leadingagekansas.org

Population Profile:

- Total Population = 75,369
 - Over 65 = 15,718
 - Medicaid (65+) = 1,032

Provider Profile:

- Residential & Nursing Care = 17
- Home Health Care = 5
- Assisted Living = 7

Focus on Residential & Nursing Care:

Economic Impact (2022):

- Direct Employment = 1,391
- Total Jobs Supported = 1,890
- Direct Wages = \$26,285,384
- Est. Total Wages = \$37,793,125
- Est. Contribution to Local Sales Tax Revenues = \$894,677

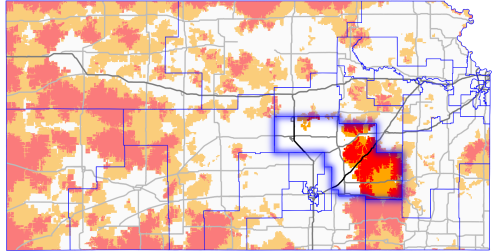
Risk to Access:

- 997 certified beds in this district
 - 42 fewer than the start of the pandemic
- 6,230 district residents have only one provider within a 30-minute drive
- 2,790 district residents have no providers within a 30-minute drive

Agency staffing is up **74.75%** since the start of the pandemic. Statewide, average agency staffing costs are up **\$14.62 per resident day** since 2020.

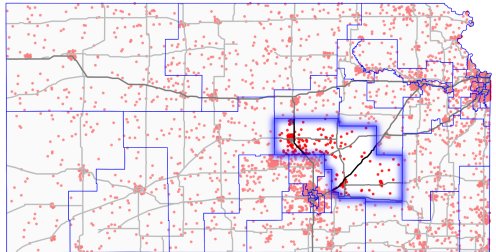
Providers Within a 30-Minute Drive

White > 1, Orange = 1, Red = 0



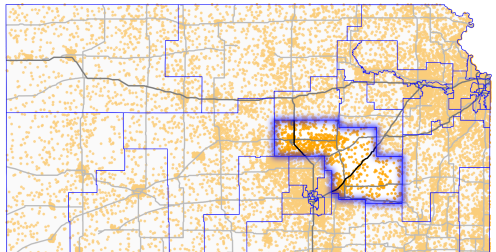
Where Kansans Aged 85+ Live

Dot = 10 Older Kansans



Where Kansans Aged 65 to 84 Live

Dot = 10 Older Kansans



AGING SERVICES IN SENATE DISTRICT 15

Contact:

Rachel Monger, President & CEO
785.233.7443, rachel@leadingagekansas.org

Population Profile:

- Total Population = 73,436
 - Over 65 = 15,153
 - Medicaid (65+) = 1,512

Provider Profile:

- Residential & Nursing Care = 13
- Home Health Care = 5
- Assisted Living = 7

Focus on Residential & Nursing Care:

Economic Impact (2022):

- Direct Employment = 571
- Total Jobs Supported = 776
- Direct Wages = \$26,306,437
- Est. Total Wages = \$37,823,395
- Est. Contribution to Local Sales Tax Revenues = \$895,393

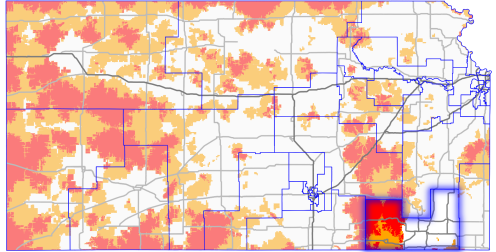
Risk to Access:

- 716 certified beds in this district
 - 60 fewer than the start of the pandemic
- 4,390 district residents have only one provider within a 30-minute drive
- 2,745 district residents have no providers within a 30-minute drive

Agency staffing is up **15.49%** since the start of the pandemic. Statewide, average agency staffing costs are up **\$14.62 per resident day** since 2020.

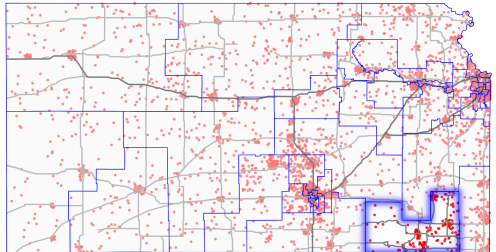
Providers Within a 30-Minute Drive

White > 1, Orange = 1, Red = 0



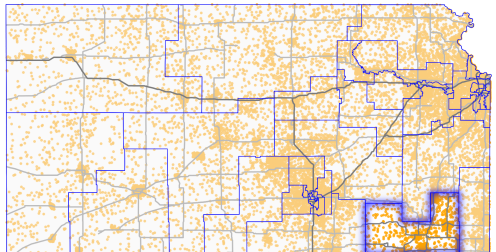
Where Kansans Aged 85+ Live

Dot = 10 Older Kansans



Where Kansans Aged 65 to 84 Live

Dot = 10 Older Kansans



AGING SERVICES IN SENATE DISTRICT 16

Contact:

Rachel Monger, President & CEO
785.233.7443, rachel@leadingagekansas.org

Population Profile:

- Total Population = 74,139
 - Over 65 = 12,824
 - Medicaid (65+) = 766

Provider Profile:

- Residential & Nursing Care = 10
- Home Health Care = 7
- Assisted Living = 10

Focus on Residential & Nursing Care:

Economic Impact (2022):

- Direct Employment = 1,191
- Total Jobs Supported = 1,618
- Direct Wages = \$18,752,821
- Est. Total Wages = \$26,962,806
- Est. Contribution to Local Sales Tax Revenues = \$638,291

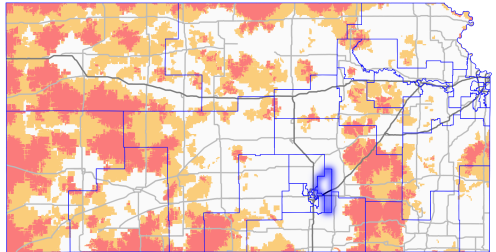
Risk to Access:

- 817 certified beds in this district
 - 140 fewer than the start of the pandemic
- 85,000 statewide have only one provider within a 30-minute drive
- 23,000 statewide have no providers within a 30-minutes drive

Agency staffing is up **23.71%** since the start of the pandemic. Statewide, average agency staffing costs are up **\$14.62 per resident day** since 2020.

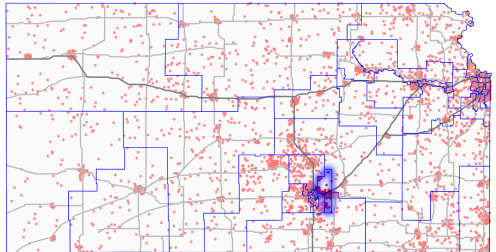
Providers Within a 30-Minute Drive

White > 1, Orange = 1, Red = 0



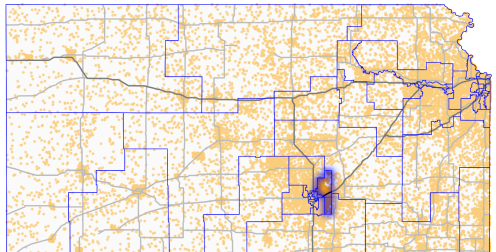
Where Kansans Aged 85+ Live

Dot = 10 Older Kansans



Where Kansans Aged 65 to 84 Live

Dot = 10 Older Kansans



AGING SERVICES IN SENATE DISTRICT 17

Contact:

Rachel Monger, President & CEO
785.233.7443, rachel@leadingagekansas.org

Population Profile:

- Total Population = 74,304
 - Over 65 = 10,045
 - Medicaid (65+) = 927

Provider Profile:

- Residential & Nursing Care = 5
- Home Health Care = 0
- Assisted Living = 4

Focus on Residential & Nursing Care:

Economic Impact (2022):

- Direct Employment = 322
- Total Jobs Supported = 437
- Direct Wages = \$14,894,742
- Est. Total Wages = \$21,415,660
- Est. Contribution to Local Sales Tax Revenues = \$506,973

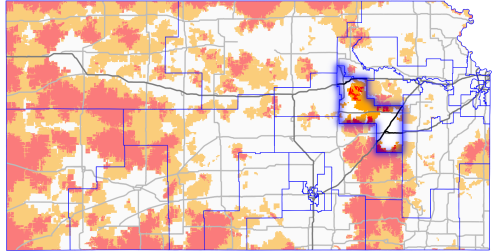
Risk to Access:

- 378 certified beds in this district
 - 15 fewer than the start of the pandemic
- 2,727 district residents have only one provider within a 30-minute drive
- 611 district residents have no providers within a 30-minute drive

Agency staffing is up **220%** since the start of the pandemic. This district has seen **above average** agency staffing cost increases.

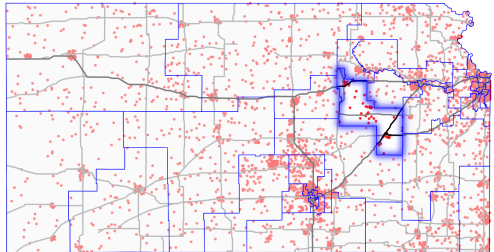
Providers Within a 30-Minute Drive

White > 1, Orange = 1, Red = 0



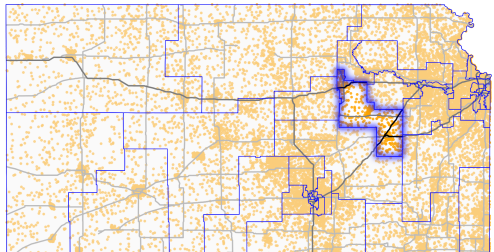
Where Kansans Aged 85+ Live

Dot = 10 Older Kansans



Where Kansans Aged 65 to 84 Live

Dot = 10 Older Kansans



AGING SERVICES IN SENATE DISTRICT 18

Contact:

Rachel Monger, President & CEO
785.233.7443, rachel@leadingagekansas.org

Population Profile:

- Total Population = 73,947
 - Over 65 = 13,705
 - Medicaid (65+) = 754

Provider Profile:

- Residential & Nursing Care = 9
- Home Health Care = 3
- Assisted Living = 6

Focus on Residential & Nursing Care:

Economic Impact (2022):

- Direct Employment = 712
- Total Jobs Supported = 967
- Direct Wages = \$18,107,244
- Est. Total Wages = \$26,034,595
- Est. Contribution to Local Sales Tax Revenues = \$616,317

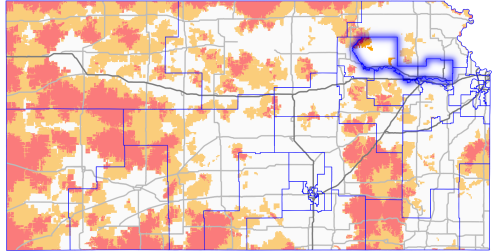
Risk to Access:

- 482 certified beds in this district
 - 30 fewer than the start of the pandemic
- 285 district residents have only one provider within a 30-minute drive
- 58 district residents have no providers within a 30-minute drive

Agency staffing is up **33.87%** since the start of the pandemic. This district has seen **above average** agency staffing cost increases.

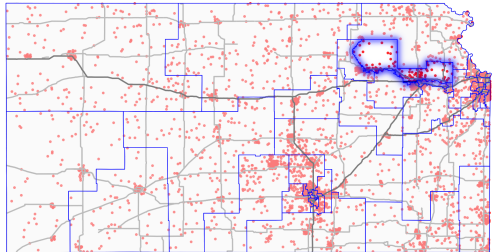
Providers Within a 30-Minute Drive

White > 1, Orange = 1, Red = 0



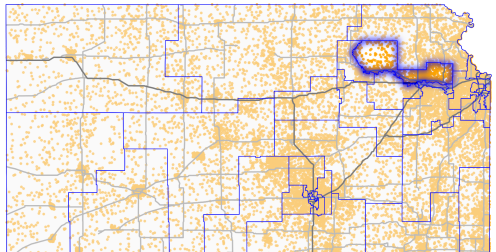
Where Kansans Aged 85+ Live

Dot = 10 Older Kansans



Where Kansans Aged 65 to 84 Live

Dot = 10 Older Kansans



AGING SERVICES IN SENATE DISTRICT 19

Contact:

Rachel Monger, President & CEO
785.233.7443, rachel@leadingagekansas.org

Population Profile:

- Total Population = 73,960
 - Over 65 = 11,331
 - Medicaid (65+) = 1,351

Provider Profile:

- Residential & Nursing Care = 6
- Home Health Care = 3
- Assisted Living = 5

Focus on Residential & Nursing Care:

Economic Impact (2022):

- Direct Employment = 603
- Total Jobs Supported = 819
- Direct Wages = \$20,123,196
- Est. Total Wages = \$28,933,131
- Est. Contribution to Local Sales Tax Revenues = \$684,934

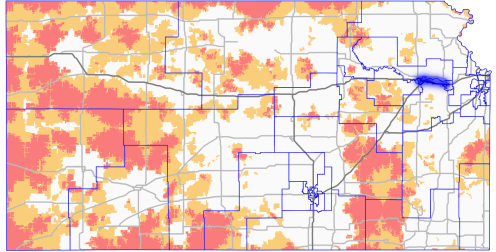
Risk to Access:

- 478 certified beds in this district
- 85,000 statewide have only one provider within a 30-minute drive
- 23,000 statewide have no providers within a 30-minutes drive

Agency staffing is up **438.89%** since the start of the pandemic. Statewide, average agency staffing costs are up **\$14.62 per resident day** since 2020.

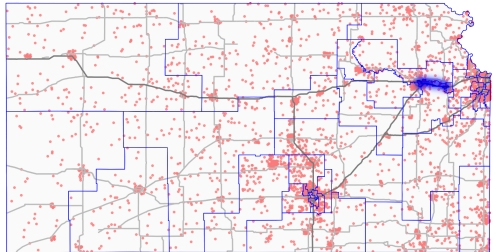
Providers Within a 30-Minute Drive

White > 1, Orange = 1, Red = 0



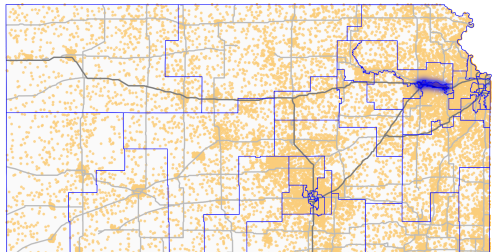
Where Kansans Aged 85+ Live

Dot = 10 Older Kansans



Where Kansans Aged 65 to 84 Live

Dot = 10 Older Kansans



AGING SERVICES IN SENATE DISTRICT 20

Contact:

Rachel Monger, President & CEO
785.233.7443, rachel@leadingagekansas.org

Population Profile:

- Total Population = 73,301
 - Over 65 = 15,773
 - Medicaid (65+) = 1,132

Provider Profile:

- Residential & Nursing Care = 8
- Home Health Care = 3
- Assisted Living = 6

Focus on Residential & Nursing Care:

Economic Impact (2022):

- Direct Employment = 820
- Total Jobs Supported = 1,114
- Direct Wages = \$19,377,313
- Est. Total Wages = \$27,860,701
- Est. Contribution to Local Sales Tax Revenues = \$659,546

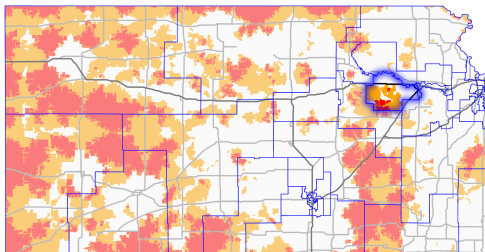
Risk to Access:

- 710 certified beds in this district
 - 108 fewer than the start of the pandemic
- 1,285 district residents have only one provider within a 30-minute drive
- 52 district residents have no providers within a 30-minute drive

Agency staffing is up **46.53%** since the start of the pandemic. Statewide, average agency staffing costs are up **\$14.62 per resident day** since 2020.

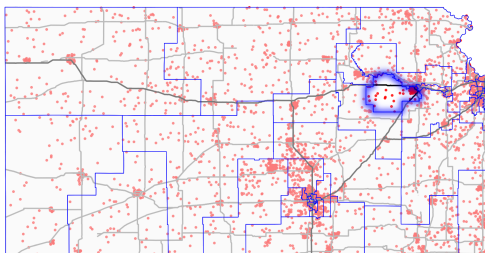
Providers Within a 30-Minute Drive

White > 1, Orange = 1, Red = 0



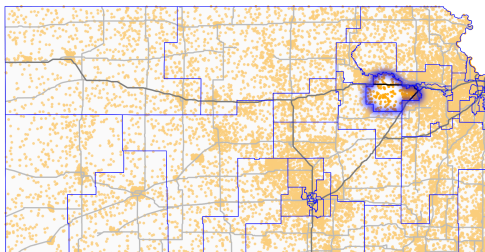
Where Kansas Aged 85+ Live

Dot = 10 Older Kansans



Where Kansas Aged 65 to 84 Live

Dot = 10 Older Kansans



AGING SERVICES IN SENATE DISTRICT 21

Contact:

Rachel Monger, President & CEO
785.233.7443, rachel@leadingagekansas.org

Population Profile:

- Total Population = 74,509
 - Over 65 = 12,176
 - Medicaid (65+) = 530

Provider Profile:

- Residential & Nursing Care = 5
- Home Health Care = 3
- Assisted Living = 8

Focus on Residential & Nursing Care:

Economic Impact (2022):

- Direct Employment = 679
- Total Jobs Supported = 922
- Direct Wages = \$11,112,609
- Est. Total Wages = \$15,977,709
- Est. Contribution to Local Sales Tax Revenues = \$378,240

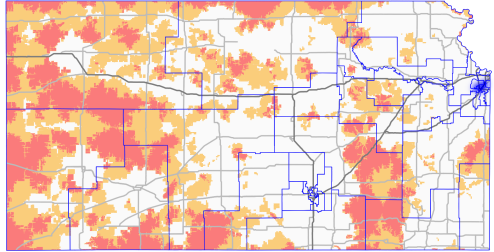
Risk to Access:

- 635 certified beds in this district
- 85,000 statewide have only one provider within a 30-minute drive
- 23,000 statewide have no providers within a 30-minutes drive

Agency staffing is up **64.44%** since the start of the pandemic. Statewide, average agency staffing costs are up **\$14.62 per resident day** since 2020.

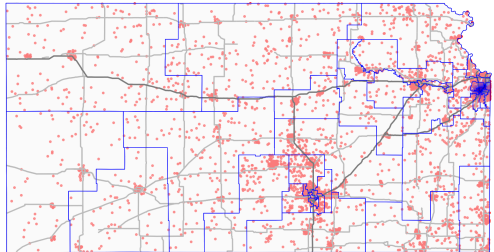
Providers Within a 30-Minute Drive

White > 1, Orange = 1, Red = 0



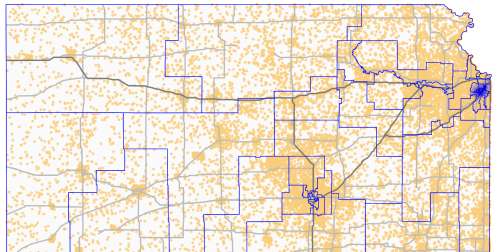
Where Kansans Aged 85+ Live

Dot = 10 Older Kansans



Where Kansans Aged 65 to 84 Live

Dot = 10 Older Kansans



AGING SERVICES IN SENATE DISTRICT 22

Contact:

Rachel Monger, President & CEO
785.233.7443, rachel@leadingagekansas.org

Population Profile:

- Total Population = 71,959
 - Over 65 = 7,348
 - Medicaid (65+) = 615

Provider Profile:

- Residential & Nursing Care = 4
- Home Health Care = 2
- Assisted Living = 5

Focus on Residential & Nursing Care:

Economic Impact (2022):

- Direct Employment = 430
- Total Jobs Supported = 584
- Direct Wages = \$10,477,400
- Est. Total Wages = \$15,064,406
- Est. Contribution to Local Sales Tax Revenues = \$356,620

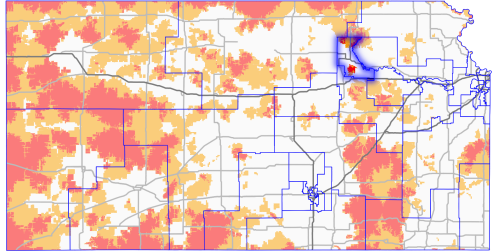
Risk to Access:

- 340 certified beds in this district
 - 16 fewer than the start of the pandemic
- 630 district residents have only one provider within a 30-minute drive
- 435 district residents have no providers within a 30-minute drive

Agency staffing is up **around 60%** statewide since the start of the pandemic. This district has seen **above average** agency staffing cost increases.

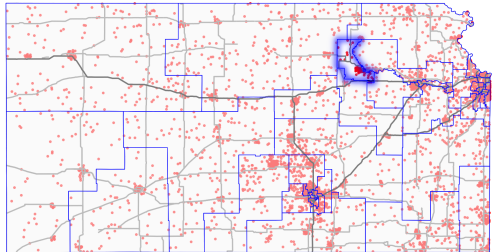
Providers Within a 30-Minute Drive

White > 1, Orange = 1, Red = 0



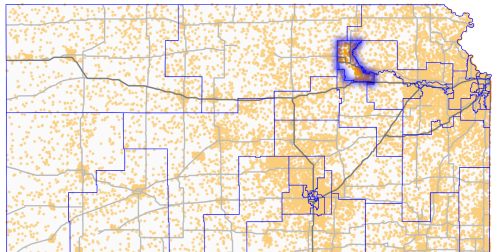
Where Kansas Aged 85+ Live

Dot = 10 Older Kansans



Where Kansas Aged 65 to 84 Live

Dot = 10 Older Kansans



AGING SERVICES IN SENATE DISTRICT 23

Contact:

Rachel Monger, President & CEO
785.233.7443, rachel@leadingagekansas.org

Population Profile:

- Total Population = 72,806
 - Over 65 = 8,660
 - Medicaid (65+) = 917

Provider Profile:

- Residential & Nursing Care = 6
- Home Health Care = 1
- Assisted Living = 6

Focus on Residential & Nursing Care:

Economic Impact (2022):

- Direct Employment = 672
- Total Jobs Supported = 913
- Direct Wages = \$8,428,577
- Est. Total Wages = \$12,118,608
- Est. Contribution to Local Sales Tax Revenues = \$286,884

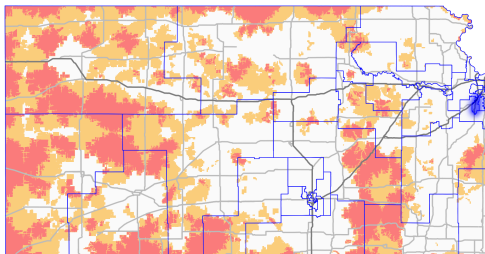
Risk to Access:

- 599 certified beds in this district
- 85,000 statewide have only one provider within a 30-minute drive
- 23,000 statewide have no providers within a 30-minutes drive

Agency staffing is up **around 60%** statewide since the start of the pandemic. Statewide, average agency staffing costs are up **\$14.62 per resident day** since 2020.

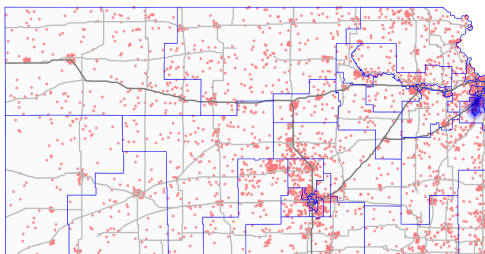
Providers Within a 30-Minute Drive

White > 1, Orange = 1, Red = 0



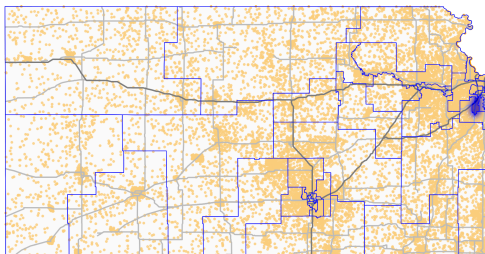
Where Kansans Aged 85+ Live

Dot = 10 Older Kansans



Where Kansans Aged 65 to 84 Live

Dot = 10 Older Kansans



AGING SERVICES IN SENATE DISTRICT 24

Contact:

Rachel Monger, President & CEO
785.233.7443, rachel@leadingagekansas.org

Population Profile:

- Total Population = 72,705
 - Over 65 = 14,041
 - Medicaid (65+) = 1,234

Provider Profile:

- Residential & Nursing Care = 10
- Home Health Care = 5
- Assisted Living = 8

Focus on Residential & Nursing Care:

Economic Impact (2022):

- Direct Employment = 771
- Total Jobs Supported = 1,047
- Direct Wages = \$14,164,146
- Est. Total Wages = \$20,365,209
- Est. Contribution to Local Sales Tax Revenues = \$482,106

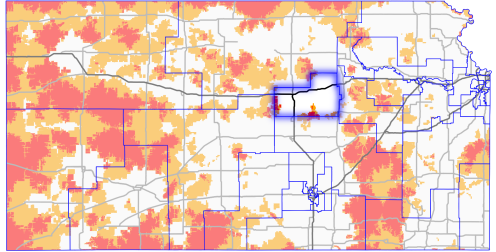
Risk to Access:

- 597 certified beds in this district
 - 61 fewer than the start of the pandemic
- 412 district residents have only one provider within a 30-minute drive
- 191 district residents have no providers within a 30-minute drive

Agency staffing is up **132.22%** since the start of the pandemic. Statewide, average agency staffing costs are up **\$14.62 per resident day** since 2020.

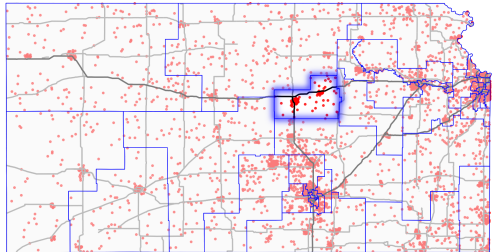
Providers Within a 30-Minute Drive

White > 1, Orange = 1, Red = 0



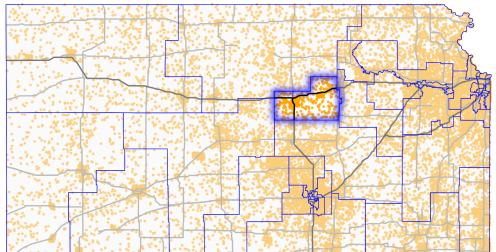
Where Kansas Aged 85+ Live

Dot = 10 Older Kansans



Where Kansas Aged 65 to 84 Live

Dot = 10 Older Kansans



AGING SERVICES IN SENATE DISTRICT 25

Contact:

Rachel Monger, President & CEO
785.233.7443, rachel@leadingagekansas.org

Population Profile:

- Total Population = 73,707
 - Over 65 = 10,428
 - Medicaid (65+) = 1,268

Provider Profile:

- Residential & Nursing Care = 7
- Home Health Care = 4
- Assisted Living = 5

Focus on Residential & Nursing Care:

Economic Impact (2022):

- Direct Employment = 477
- Total Jobs Supported = 648
- Direct Wages = \$14,705,354
- Est. Total Wages = \$21,143,358
- Est. Contribution to Local Sales Tax Revenues = \$500,527

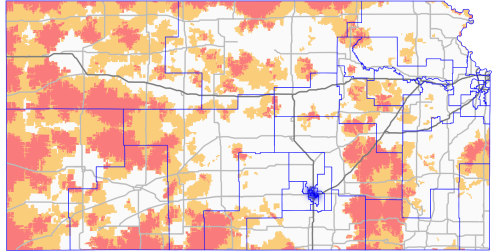
Risk to Access:

- 378 certified beds in this district
 - 133 fewer than the start of the pandemic
- 85,000 statewide have only one provider within a 30-minute drive
- 23,000 statewide have no providers within a 30-minutes drive

Agency staffing is up **254%** since the start of the pandemic. This district has seen **above average** agency staffing cost increases.

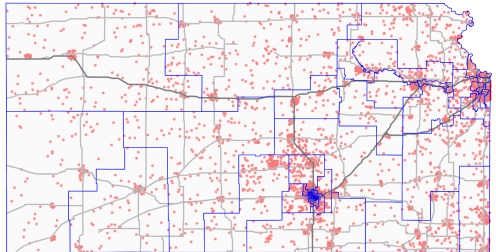
Providers Within a 30-Minute Drive

White > 1, Orange = 1, Red = 0



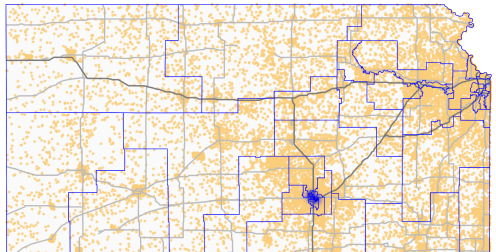
Where Kansans Aged 85+ Live

Dot = 10 Older Kansans



Where Kansans Aged 65 to 84 Live

Dot = 10 Older Kansans



AGING SERVICES IN SENATE DISTRICT 26

Contact:

Rachel Monger, President & CEO
785.233.7443, rachel@leadingagekansas.org

Population Profile:

- Total Population = 73,190
 - Over 65 = 10,506
 - Medicaid (65+) = 630

Provider Profile:

- Residential & Nursing Care = 7
- Home Health Care = 0
- Assisted Living = 5

Focus on Residential & Nursing Care:

Economic Impact (2022):

- Direct Employment = 644
- Total Jobs Supported = 875
- Direct Wages = \$14,247,101
- Est. Total Wages = \$20,484,482
- Est. Contribution to Local Sales Tax Revenues = \$484,929

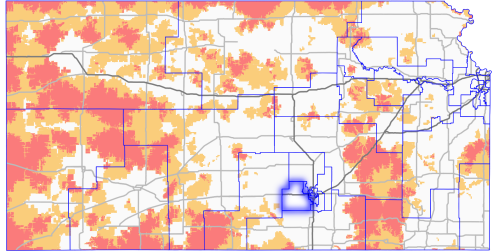
Risk to Access:

- 467 certified beds in this district
- 85,000 statewide have only one provider within a 30-minute drive
- 23,000 statewide have no providers within a 30-minutes drive

Agency staffing is up **68.21%** since the start of the pandemic. Statewide, average agency staffing costs are up **\$14.62 per resident day** since 2020.

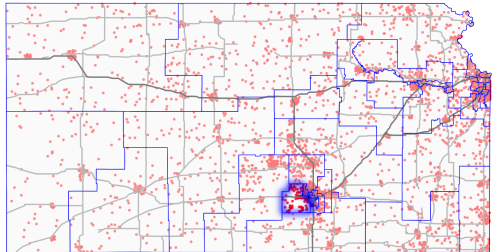
Providers Within a 30-Minute Drive

White > 1, Orange = 1, Red = 0



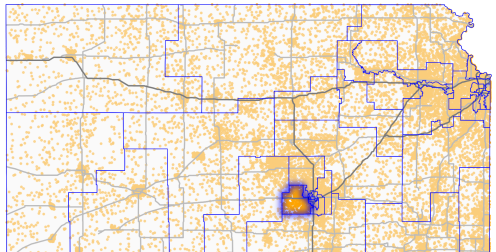
Where Kansas Aged 85+ Live

Dot = 10 Older Kansans



Where Kansas Aged 65 to 84 Live

Dot = 10 Older Kansans



AGING SERVICES IN SENATE DISTRICT 27

Contact:

Rachel Monger, President & CEO
785.233.7443, rachel@leadingagekansas.org

Population Profile:

- Total Population = 72,864
 - Over 65 = 13,204
 - Medicaid (65+) = 648

Provider Profile:

- Residential & Nursing Care = 4
- Home Health Care = 2
- Assisted Living = 6

Focus on Residential & Nursing Care:

Economic Impact (2022):

- Direct Employment = 381
- Total Jobs Supported = 518
- Direct Wages = \$9,831,272
- Est. Total Wages = \$14,135,403
- Est. Contribution to Local Sales Tax Revenues = \$334,627

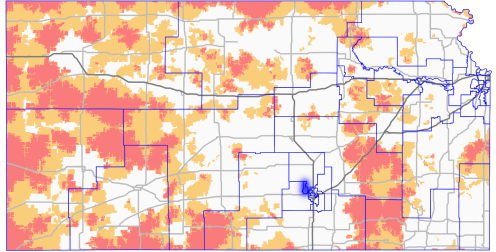
Risk to Access:

- 394 certified beds in this district
- 85,000 statewide have only one provider within a 30-minute drive
- 23,000 statewide have no providers within a 30-minutes drive

Agency staffing is up **191.43%** since the start of the pandemic. This district has seen **above average** agency staffing cost increases.

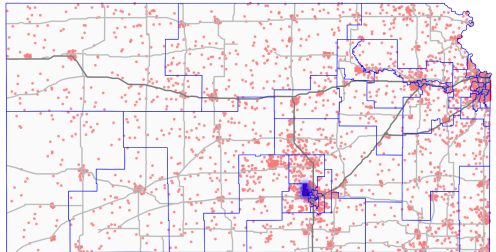
Providers Within a 30-Minute Drive

White > 1, Orange = 1, Red = 0



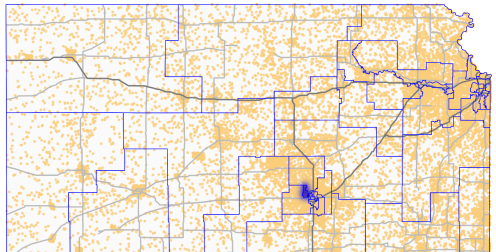
Where Kansans Aged 85+ Live

Dot = 10 Older Kansans



Where Kansans Aged 65 to 84 Live

Dot = 10 Older Kansans



AGING SERVICES IN SENATE DISTRICT 28

Contact:

Rachel Monger, President & CEO
785.233.7443, rachel@leadingagekansas.org

Population Profile:

- Total Population = 72,346
 - Over 65 = 10,134
 - Medicaid (65+) = 817

Provider Profile:

- Residential & Nursing Care = 1
- Home Health Care = 1
- Assisted Living = 2

Focus on Residential & Nursing Care:

Economic Impact (2022):

- Direct Employment = 75
- Total Jobs Supported = 102

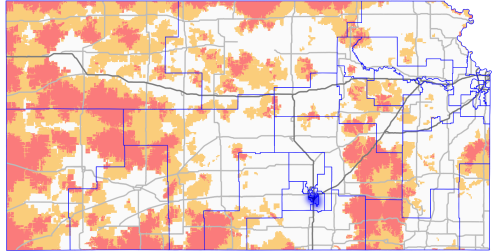
Risk to Access:

- 60 certified beds in this district
- 85,000 statewide have only one provider within a 30-minute drive
- 23,000 statewide have no providers within a 30-minutes drive

Agency staffing is up **27.27%** since the start of the pandemic. Statewide, average agency staffing costs are up **\$14.62 per resident day** since 2020.

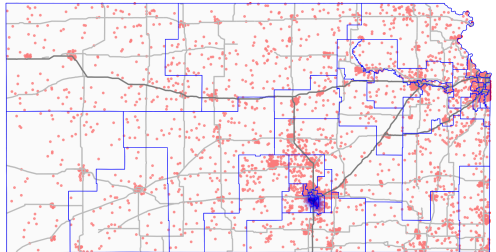
Providers Within a 30-Minute Drive

White > 1, Orange = 1, Red = 0



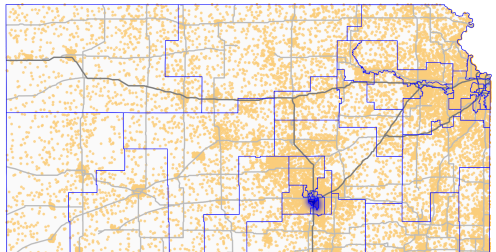
Where Kansans Aged 85+ Live

Dot = 10 Older Kansans



Where Kansans Aged 65 to 84 Live

Dot = 10 Older Kansans



AGING SERVICES IN SENATE DISTRICT 29

Contact:

Rachel Monger, President & CEO
785.233.7443, rachel@leadingagekansas.org

Population Profile:

- Total Population = 75,016
 - Over 65 = 8,733
 - Medicaid (65+) = 1,171

Provider Profile:

- Residential & Nursing Care = 3
- Home Health Care = 3
- Assisted Living = 1

Focus on Residential & Nursing Care:

Economic Impact (2022):

- Direct Employment = 172
- Total Jobs Supported = 234
- Direct Wages = \$6,113,982
- Est. Total Wages = \$8,790,683
- Est. Contribution to Local Sales Tax Revenues = \$208,102

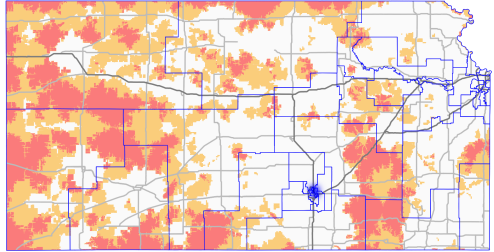
Risk to Access:

- 144 certified beds in this district
 - 15 fewer than the start of the pandemic
- 85,000 statewide have only one provider within a 30-minute drive
- 23,000 statewide have no providers within a 30-minutes drive

Agency staffing is up **around 60%** statewide since the start of the pandemic. This district has seen **above average** agency staffing cost increases.

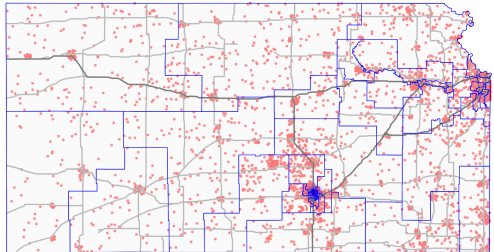
Providers Within a 30-Minute Drive

White > 1, Orange = 1, Red = 0



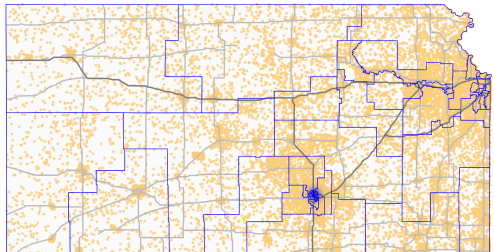
Where Kansans Aged 85+ Live

Dot = 10 Older Kansans



Where Kansans Aged 65 to 84 Live

Dot = 10 Older Kansans



AGING SERVICES IN SENATE DISTRICT 30

Contact:

Rachel Monger, President & CEO
785.233.7443, rachel@leadingagekansas.org

Population Profile:

- Total Population = 72,079
 - Over 65 = 12,019
 - Medicaid (65+) = 620

Provider Profile:

- Residential & Nursing Care = 3
- Home Health Care = 6
- Assisted Living = 4

Focus on Residential & Nursing Care:

Economic Impact (2022):

- Direct Employment = 481
- Total Jobs Supported = 653
- Direct Wages = \$6,725,830
- Est. Total Wages = \$9,670,398
- Est. Contribution to Local Sales Tax Revenues = \$228,927

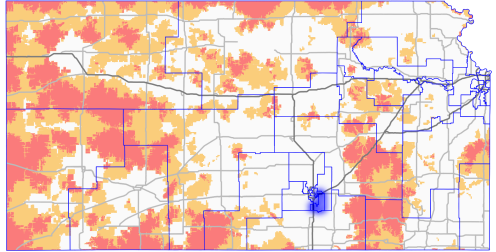
Risk to Access:

- 258 certified beds in this district
- 85,000 statewide have only one provider within a 30-minute drive
- 23,000 statewide have no providers within a 30-minutes drive

Agency staffing is up **25.29%** since the start of the pandemic. This district has seen **above average** agency staffing cost increases.

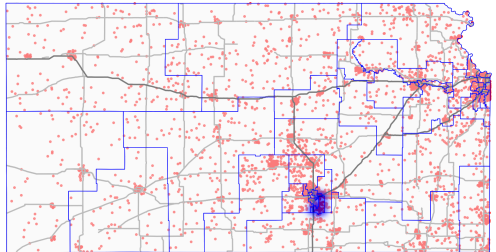
Providers Within a 30-Minute Drive

White > 1, Orange = 1, Red = 0



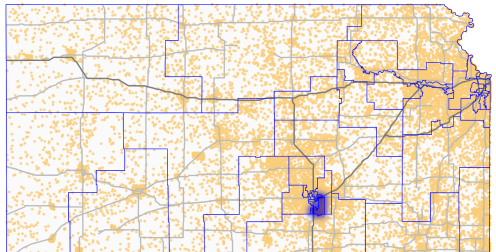
Where Kansans Aged 85+ Live

Dot = 10 Older Kansans



Where Kansans Aged 65 to 84 Live

Dot = 10 Older Kansans



AGING SERVICES IN SENATE DISTRICT 31

Contact:

Rachel Monger, President & CEO
785.233.7443, rachel@leadingagekansas.org

Population Profile:

- Total Population = 74,249
 - Over 65 = 13,626
 - Medicaid (65+) = 1,338

Provider Profile:

- Residential & Nursing Care = 8
- Home Health Care = 1
- Assisted Living = 5

Focus on Residential & Nursing Care:

Economic Impact (2022):

- Direct Employment = 808
- Total Jobs Supported = 1,098
- Direct Wages = \$12,574,669
- Est. Total Wages = \$18,079,859
- Est. Contribution to Local Sales Tax Revenues = \$428,005

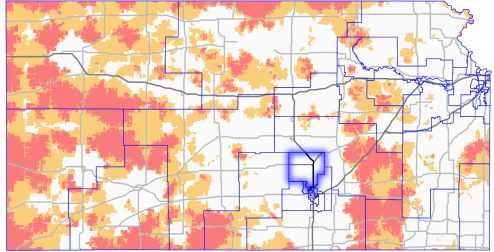
Risk to Access:

- 512 certified beds in this district
 - 59 fewer than the start of the pandemic
- 85,000 statewide have only one provider within a 30-minute drive
- 23,000 statewide have no providers within a 30-minutes drive

Agency staffing is up **57.02%** since the start of the pandemic. Statewide, average agency staffing costs are up **\$14.62 per resident day** since 2020.

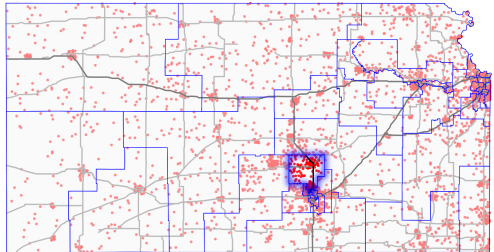
Providers Within a 30-Minute Drive

White > 1, Orange = 1, Red = 0



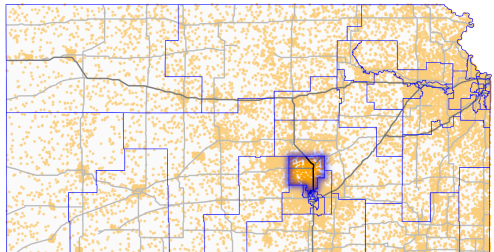
Where Kansans Aged 85+ Live

Dot = 10 Older Kansans



Where Kansans Aged 65 to 84 Live

Dot = 10 Older Kansans



AGING SERVICES IN SENATE DISTRICT 32

Contact:

Rachel Monger, President & CEO
785.233.7443, rachel@leadingagekansas.org

Population Profile:

- Total Population = 75,319
 - Over 65 = 14,660
 - Medicaid (65+) = 1,263

Provider Profile:

- Residential & Nursing Care = 13
- Home Health Care = 2
- Assisted Living = 9

Focus on Residential & Nursing Care:

Economic Impact (2022):

- Direct Employment = 827
- Total Jobs Supported = 1,123
- Direct Wages = \$25,669,414
- Est. Total Wages = \$36,907,483
- Est. Contribution to Local Sales Tax Revenues = \$873,711

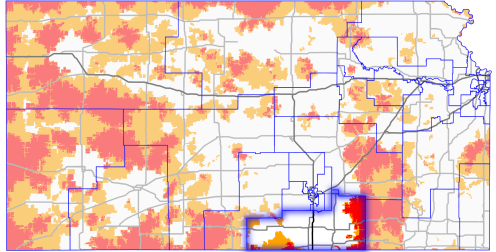
Risk to Access:

- 616 certified beds in this district
 - 113 fewer than the start of the pandemic
- 1,650 district residents have only one provider within a 30-minute drive
- 1,223 district residents have no providers within a 30-minute drive

Agency staffing is up **56.52%** since the start of the pandemic. Statewide, average agency staffing costs are up **\$14.62 per resident day** since 2020.

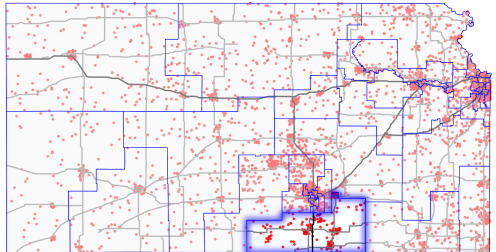
Providers Within a 30-Minute Drive

White > 1, Orange = 1, Red = 0



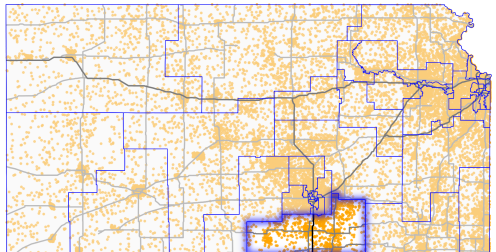
Where Kansans Aged 85+ Live

Dot = 10 Older Kansans



Where Kansans Aged 65 to 84 Live

Dot = 10 Older Kansans



AGING SERVICES IN SENATE DISTRICT 33

Contact:

Rachel Monger, President & CEO
785.233.7443, rachel@leadingagekansas.org

Population Profile:

- Total Population = 73,477
 - Over 65 = 15,801
 - Medicaid (65+) = 1,459

Provider Profile:

- Residential & Nursing Care = 19
- Home Health Care = 5
- Assisted Living = 10

Focus on Residential & Nursing Care:

Economic Impact (2022):

- Direct Employment = 864
- Total Jobs Supported = 1,174
- Direct Wages = \$23,386,915
- Est. Total Wages = \$33,625,706
- Est. Contribution to Local Sales Tax Revenues = \$796,021

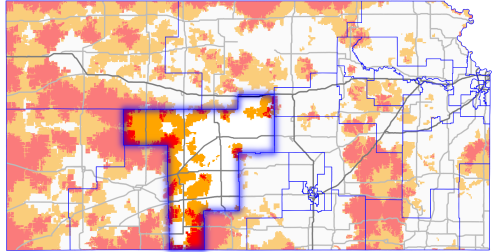
Risk to Access:

- 700 certified beds in this district
 - 67 fewer than the start of the pandemic
- 8,825 district residents have only one provider within a 30-minute drive
- 755 district residents have no providers within a 30-minute drive

Agency staffing is up **68.91%** since the start of the pandemic. Statewide, average agency staffing costs are up **\$14.62 per resident day** since 2020.

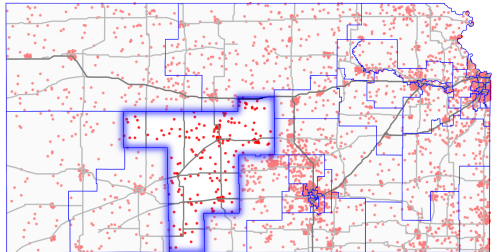
Providers Within a 30-Minute Drive

White > 1, Orange = 1, Red = 0



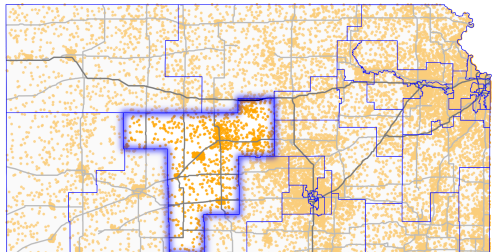
Where Kansans Aged 85+ Live

Dot = 10 Older Kansans



Where Kansans Aged 65 to 84 Live

Dot = 10 Older Kansans



AGING SERVICES IN SENATE DISTRICT 34

Contact:

Rachel Monger, President & CEO
785.233.7443, rachel@leadingagekansas.org

Population Profile:

- Total Population = 73,596
 - Over 65 = 15,465
 - Medicaid (65+) = 1,353

Provider Profile:

- Residential & Nursing Care = 10
- Home Health Care = 1
- Assisted Living = 7

Focus on Residential & Nursing Care:

Economic Impact (2022):

- Direct Employment = 752
- Total Jobs Supported = 1,022
- Direct Wages = \$26,871,302
- Est. Total Wages = \$38,635,558
- Est. Contribution to Local Sales Tax Revenues = \$914,620

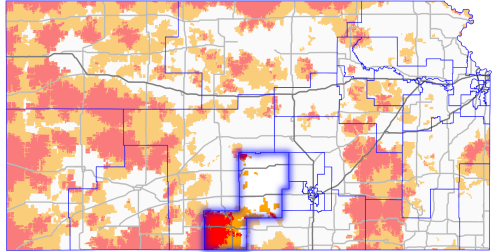
Risk to Access:

- 561 certified beds in this district
 - 20 fewer than the start of the pandemic
- 2,341 district residents have only one provider within a 30-minute drive
- 494 district residents have no providers within a 30-minute drive

Agency staffing is up **25.19%** since the start of the pandemic. This district has seen **above average** agency staffing cost increases.

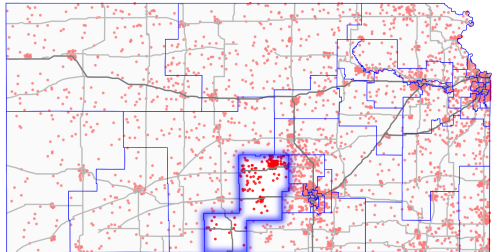
Providers Within a 30-Minute Drive

White > 1, Orange = 1, Red = 0



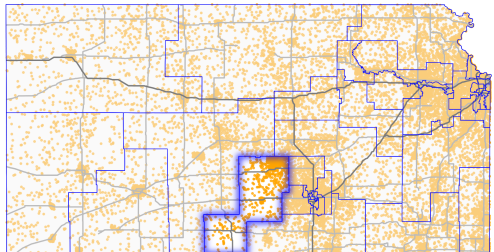
Where Kansas Aged 85+ Live

Dot = 10 Older Kansans



Where Kansas Aged 65 to 84 Live

Dot = 10 Older Kansans



AGING SERVICES IN SENATE DISTRICT 35

Contact:

Rachel Monger, President & CEO
785.233.7443, rachel@leadingagekansas.org

Population Profile:

- Total Population = 73,789
 - Over 65 = 9,213
 - Medicaid (65+) = 306

Provider Profile:

- Residential & Nursing Care = 3
- Home Health Care = 1
- Assisted Living = 4

Focus on Residential & Nursing Care:

Economic Impact (2022):

- Direct Employment = 318
- Total Jobs Supported = 432
- Direct Wages = \$2,717,818
- Est. Total Wages = \$3,907,679
- Est. Contribution to Local Sales Tax Revenues = \$92,506

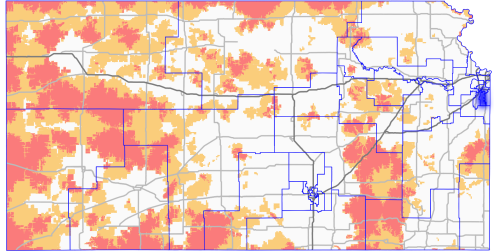
Risk to Access:

- 147 certified beds in this district
- 85,000 statewide have only one provider within a 30-minute drive
- 23,000 statewide have no providers within a 30-minutes drive

Agency staffing is up **87.76%** since the start of the pandemic. Statewide, average agency staffing costs are up **\$14.62 per resident day** since 2020.

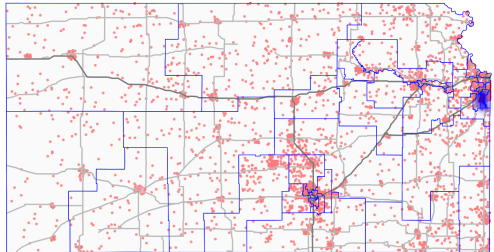
Providers Within a 30-Minute Drive

White > 1, Orange = 1, Red = 0



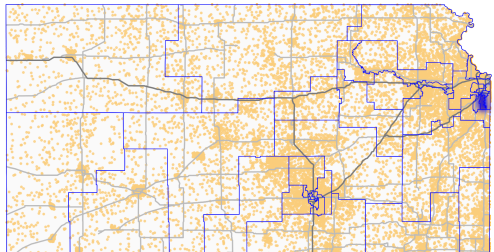
Where Kansas Aged 85+ Live

Dot = 10 Older Kansans



Where Kansas Aged 65 to 84 Live

Dot = 10 Older Kansans



AGING SERVICES IN SENATE DISTRICT 36

Contact:

Rachel Monger, President & CEO
785.233.7443, rachel@leadingagekansas.org

Population Profile:

- Total Population = 71,799
 - Over 65 = 17,430
 - Medicaid (65+) = 1,331

Provider Profile:

- Residential & Nursing Care = 22
- Home Health Care = 6
- Assisted Living = 11

Focus on Residential & Nursing Care:

Economic Impact (2022):

- Direct Employment = 1,086
- Total Jobs Supported = 1,475
- Direct Wages = \$30,619,008
- Est. Total Wages = \$44,024,010
- Est. Contribution to Local Sales Tax Revenues = \$1,042,180

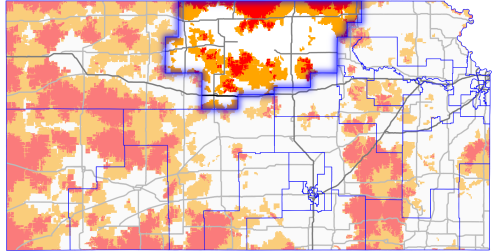
Risk to Access:

- 925 certified beds in this district
 - 75 fewer than the start of the pandemic
- 10,636 district residents have only one provider within a 30-minute drive
- 3,460 district residents have no providers within a 30-minute drive

Agency staffing is up **45.21%** since the start of the pandemic. This district has seen **above average** agency staffing cost increases.

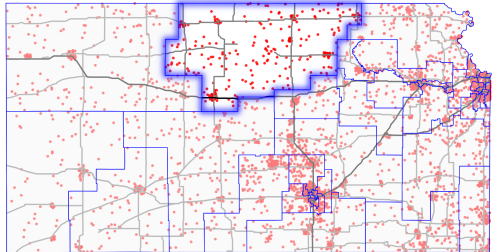
Providers Within a 30-Minute Drive

White > 1, Orange = 1, Red = 0



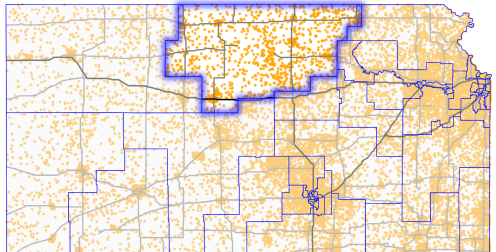
Where Kansas Aged 85+ Live

Dot = 10 Older Kansans



Where Kansas Aged 65 to 84 Live

Dot = 10 Older Kansans



AGING SERVICES IN SENATE DISTRICT 37

Contact:

Rachel Monger, President & CEO
785.233.7443, rachel@leadingagekansas.org

Population Profile:

- Total Population = 71,781
 - Over 65 = 8,296
 - Medicaid (65+) = 491

Provider Profile:

- Residential & Nursing Care = 3
- Home Health Care = 0
- Assisted Living = 2

Focus on Residential & Nursing Care:

Economic Impact (2022):

- Direct Employment = 256
- Total Jobs Supported = 348
- Direct Wages = \$3,051,218
- Est. Total Wages = \$4,387,041
- Est. Contribution to Local Sales Tax Revenues = \$103,854

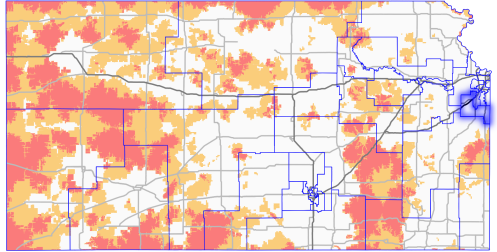
Risk to Access:

- 102 certified beds in this district
 - 82 fewer than the start of the pandemic
- 85,000 statewide have only one provider within a 30-minute drive
- 23,000 statewide have no providers within a 30-minutes drive

Agency staffing is up **16.67%** since the start of the pandemic. This district has seen **above average** agency staffing cost increases.

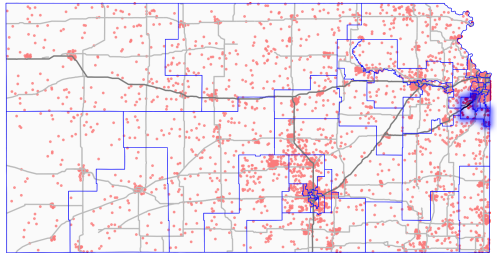
Providers Within a 30-Minute Drive

White > 1, Orange = 1, Red = 0



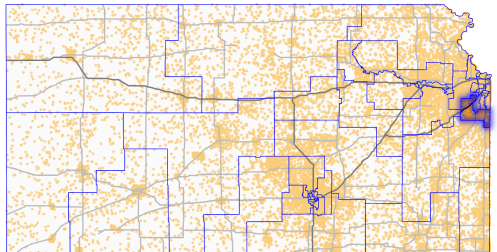
Where Kansas Aged 85+ Live

Dot = 10 Older Kansans



Where Kansas Aged 65 to 84 Live

Dot = 10 Older Kansans



AGING SERVICES IN SENATE DISTRICT 38

Contact:

Rachel Monger, President & CEO
785.233.7443, rachel@leadingagekansas.org

Population Profile:

- Total Population = 73,453
 - Over 65 = 9,309
 - Medicaid (65+) = 928

Provider Profile:

- Residential & Nursing Care = 14
- Home Health Care = 2
- Assisted Living = 4

Focus on Residential & Nursing Care:

Economic Impact (2022):

- Direct Employment = 826
- Total Jobs Supported = 1,122
- Direct Wages = \$24,953,807
- Est. Total Wages = \$35,878,584
- Est. Contribution to Local Sales Tax Revenues = \$849,354

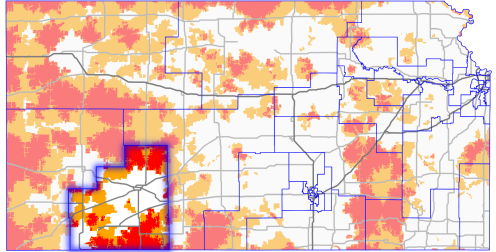
Risk to Access:

- 557 certified beds in this district
 - 34 fewer than the start of the pandemic
- 6,504 district residents have only one provider within a 30-minute drive
- 2,077 district residents have no providers within a 30-minute drive

Agency staffing is up **81.46%** since the start of the pandemic. Statewide, average agency staffing costs are up **\$14.62 per resident day** since 2020.

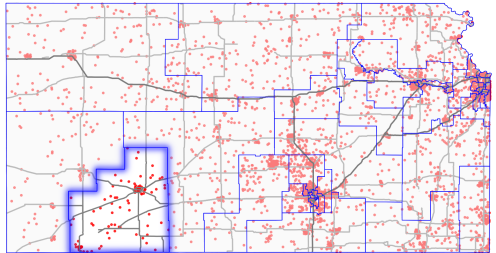
Providers Within a 30-Minute Drive

White > 1, Orange = 1, Red = 0



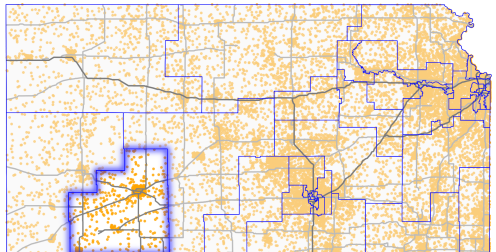
Where Kansans Aged 85+ Live

Dot = 10 Older Kansans



Where Kansans Aged 65 to 84 Live

Dot = 10 Older Kansans



AGING SERVICES IN SENATE DISTRICT 39

Contact:

Rachel Monger, President & CEO
785.233.7443, rachel@leadingagekansas.org

Population Profile:

- Total Population = 72,519
 - Over 65 = 10,060
 - Medicaid (65+) = 1,099

Provider Profile:

- Residential & Nursing Care = 9
- Home Health Care = 3
- Assisted Living = 6

Focus on Residential & Nursing Care:

Economic Impact (2022):

- Direct Employment = 454
- Total Jobs Supported = 617
- Direct Wages = \$15,982,924
- Est. Total Wages = \$22,980,248
- Est. Contribution to Local Sales Tax Revenues = \$544,011

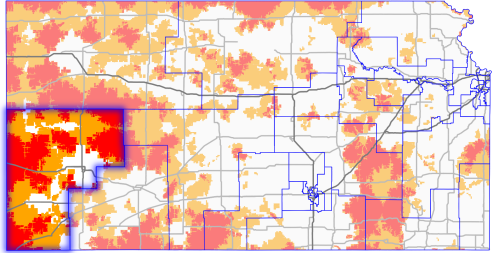
Risk to Access:

- 429 certified beds in this district
 - 26 fewer than the start of the pandemic
- 12,363 district residents have only one provider within a 30-minute drive
- 4,769 district residents have no providers within a 30-minute drive

Agency staffing is up **34.09%** since the start of the pandemic. This district has seen **above average** agency staffing cost increases.

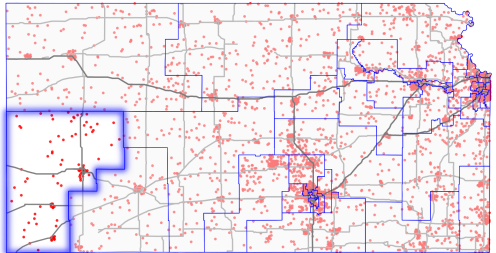
Providers Within a 30-Minute Drive

White > 1, Orange = 1, Red = 0



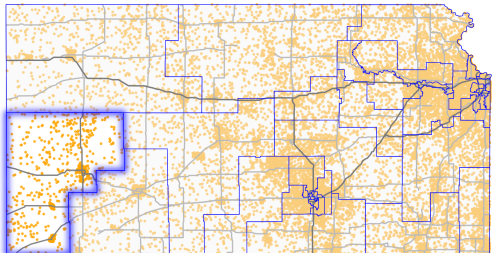
Where Kansas Aged 85+ Live

Dot = 10 Older Kansans



Where Kansas Aged 65 to 84 Live

Dot = 10 Older Kansans



AGING SERVICES IN SENATE DISTRICT 40

Contact:

Rachel Monger, President & CEO
785.233.7443, rachel@leadingagekansas.org

Population Profile:

- Total Population = 72,101
 - Over 65 = 14,417
 - Medicaid (65+) = 1,384

Provider Profile:

- Residential & Nursing Care = 17
- Home Health Care = 7
- Assisted Living = 9

Focus on Residential & Nursing Care:

Economic Impact (2022):

- Direct Employment = 880
- Total Jobs Supported = 1,195
- Direct Wages = \$27,349,303
- Est. Total Wages = \$39,322,828
- Est. Contribution to Local Sales Tax Revenues = \$930,889

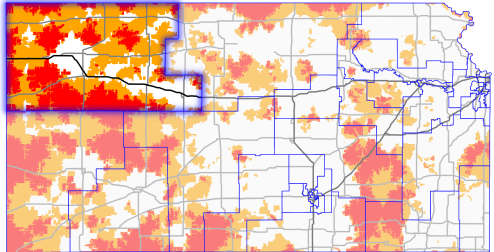
Risk to Access:

- 655 certified beds in this district
 - 91 fewer than the start of the pandemic
- 21,202 district residents have only one provider within a 30-minute drive
- 2,522 district residents have no providers within a 30-minute drive

Agency staffing is up **30.91%** since the start of the pandemic. Statewide, average agency staffing costs are up **\$14.62 per resident day** since 2020.

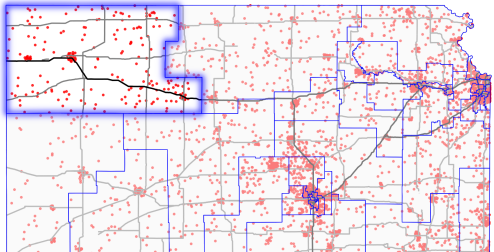
Providers Within a 30-Minute Drive

White > 1, Orange = 1, Red = 0



Where Kansans Aged 85+ Live

Dot = 10 Older Kansans



Where Kansans Aged 65 to 84 Live

Dot = 10 Older Kansans

